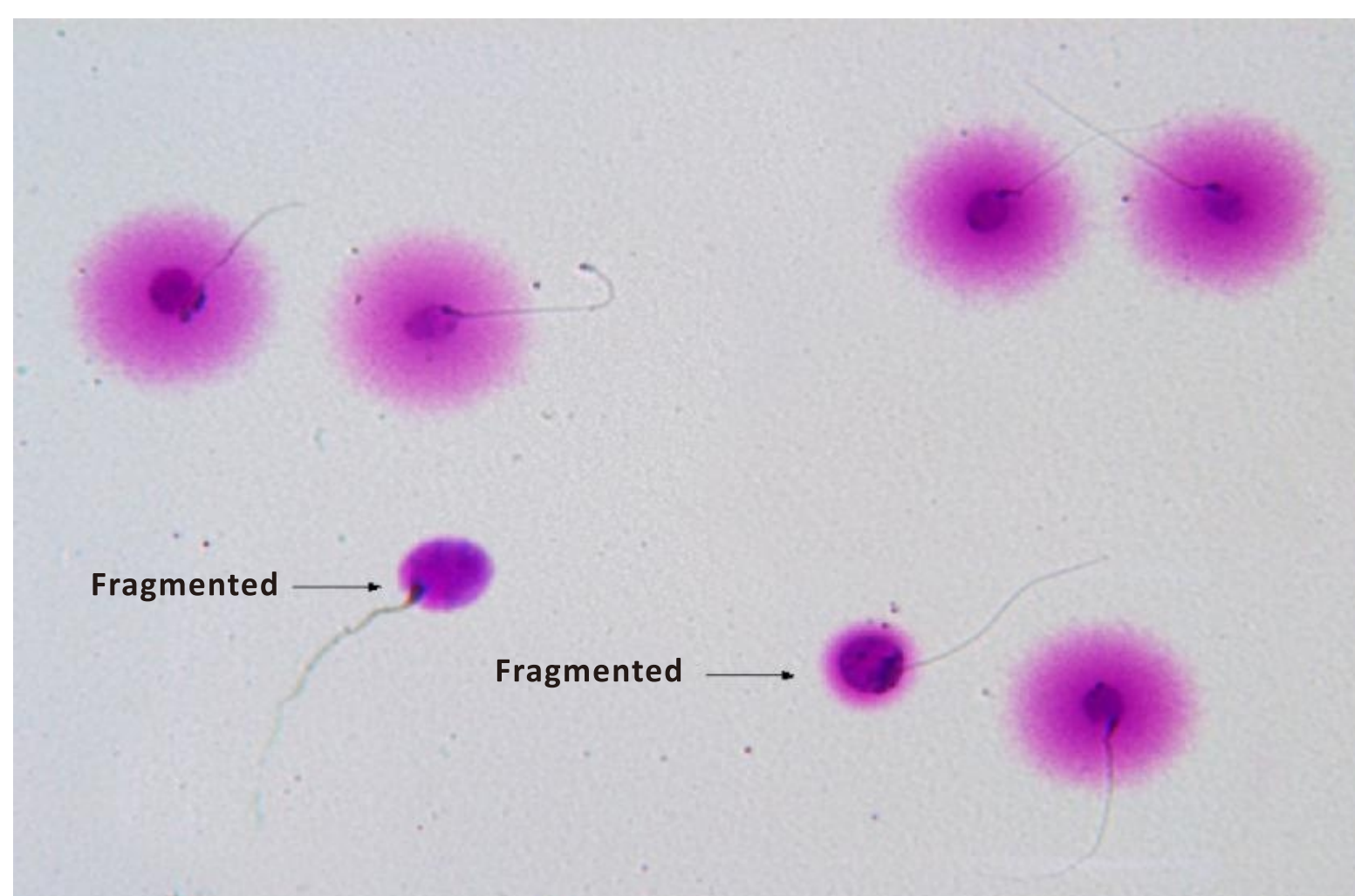


## Sperm DNA Fragmentation Test ( SCD )

---

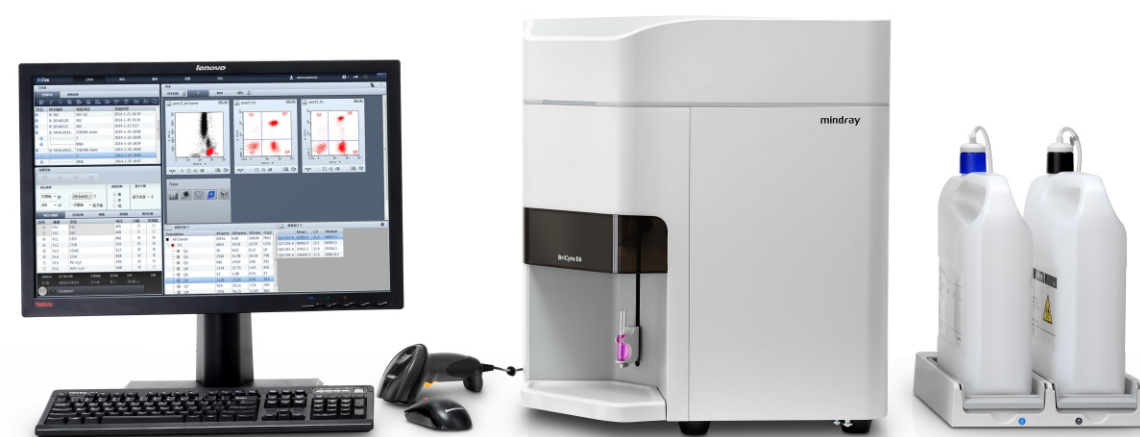


- *Less than 1.5h to complete assay.*
- *SCD preservative reagents, creative to release labor of operators.*
- *High quality, stable performance, high correlation with SCSA.*
- *Perfect staining of halo and core, distinctive tail and head.*
- *Observed via microscope, cost-effective way to common laboratory.*

## Sperm Chromation Structure Assay( SCSA )

---

- *Operated on flow cytometer.*
- *Easy to use. Operated on flow cytometer.*
- *Time-efficiency (10min).*
- *Accurate and repeatable result.*



**BriCyte E6 Flow cytometer**  
— A Bright Cytometer Easy to use